

Coeur CST High-Current Interconnect System

molex

Coeur CST High-Current Interconnect System delivers current ratings between 30.0 and 200.0A and offers a wide range of configurations, connecting PCBs, bus bars and cables

Features and Advantages

Capable of 30.0 to above 200.0A current rating

Offers a scalable design to meet a wide range of high-current applications

Termination methods include bus bars, PCBs and wire

Provides design flexibility for a range of high-current applications

Sockets without Float Feature

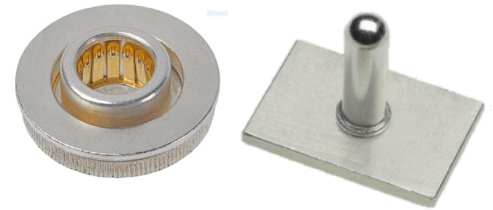
Series 204316



Series 204318



Coeur CST High-Current 8.00mm Socket and Male Pin



Coeur CST Socket Features

Multiple contact beams

Provide optimized electrical performance



One common contact design in all CST sockets regardless of form factor sizes

Provides the same profile height even when the number of contacts varies

Sockets with Float Feature

Press-Fit

SMT

Series 204313



Series 204365

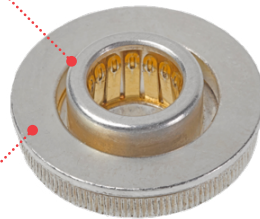


Unique Float Feature

8.00mm SMT Socket (Series 204313)

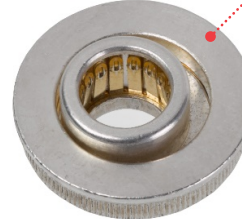
Core Socket with Contacts in Nominal Position

Float Housing



Core Socket with Contacts Fully Floated 1.00mm

8.00mm Press-Fit Socket

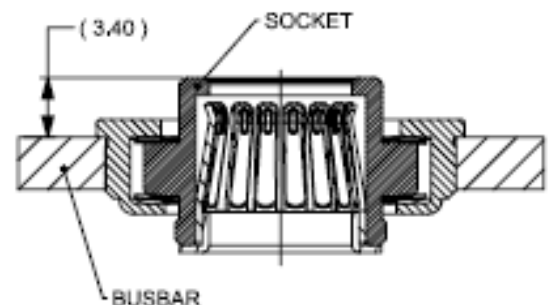


Wave springs provide float mechanism so entire core socket assembly moves within the float housing

No added stress on contacts in float position

Low mating forces

No risk of resistance increase due to high contact beam deflection



Coeur CST High-Current Interconnect System

molex

Terminal retention housings
Locks in contacts

1/0 AWG crimp contacts
For 8.0mm form factor
Makes smaller AWG possible

Fully shrouded female and male contacts
Touch safe. 600V rating in configuration show above

Male pin does not protrude above the socket housing when mated by a top entry
Saves space above the PCB or bus bar

Board-to-Board Mated Height Changes by Varying Male Pin Length (Series 203263)

Premium housing features available

- Touch-safe feature
- Mate-first-last-break option
- Positive latching
- Panel-mount options available
- Vertical, right-angle, PCB, bus bar-mounting header options

2-circuit, 8.00mm version shown is currently available. Additional circuit sizes and configurations planned
Plan is for a broad W-to-W/W-to-B product portfolio

8.0mm Coeur CST Interconnector System, 2-Circuit, Wire-to-Board (Female Housing: Series 204601, 204603; Male Header: Series 204600; Male Pin: Series 203263)

Pick-and-place cap available
Enables automated SMT socket placement to PCB

Coeur CST Connector Embedded in a Bus Bar

Coeur CST Connector Mounted to a PCB

Applications

Telecommunications/Networking

Servers

Storage

Industrial

Power Supply

Data Centers

Servers

Data Storage

PDU

UPS/Battery Storage

Switches

Circuit Breakers

Instrumentation



Data Center Servers

Specifications

REFERENCE INFORMATION

Packaging: Partitioned Box/Bulk; Tape and Reel, Tray
Coming in Q4 2018

UL File No.: TBD

CSA File No.: 70184994

Use With: Triton Bus Bars

Designed In: Millimeters

RoHS: Yes

Halogen Free: Yes

ELECTRICAL

Voltage: 600V (2-Circuit W-to-B)

Current (max.): 200.0A

Contact Resistance: .20 milliohms

MECHANICAL

Contact Mating Force (max.): 40N

Contact Unmating Force (min.): 10N

Float Displacement Force (max.): 15N

PHYSICAL

Plastic Housing: 30% Glass-Filled PBT

Contact: High-Performance Copper Alloy

Metal Housings/Caps: Copper Alloy

Plating:

Contact Beams — Gold (Au) over Nickel (Ni)

Wave Springs (Float Versions) — Gold (Au) over Nickel (Ni)

Male Pin — Silver (Ag) over Nickel (Ni)

Metal Housings / Caps — Silver (Ag) over Nickel (Ni)

PCB Thickness (min.): 1.60mm

Bus Bar Thickness (min.): 1.50mm

Operating Temperature: -40 to +105°C

Coeur CST High-Current Interconnect System

molex

Ordering Information

Series No.	Component	Termination Method	Float Feature	Diameter (mm)
204365-0010	Female Socket	SMT	Yes	8
204318-0001			No	
204313-0010		Press-Fit	Yes	
204316-0001			No	
204608-0001	Female Socket for 1/0 AWG	Crimp	No	
203263-0001	Male Pin	Press-Fit	N/A	
204600-0001	Male Header	Screw Attach		
204601-0001	Female Housing	Crimp		
204603-0001	Female Terminal Retention Housing			

Custom Product	Description
Contact Molex	Coeur CST Custom Pins and Housings

www.molex.com/link/coeur.html

Molex is a registered trademark of Molex, LLC in the United States of America and may be registered in other countries; all other trademarks listed herein belong to their respective owners.