

BOARD TO BOARD/WIRE

- Compatible with other leading manufacturers
- Competitively priced
- Tin plated contacts
- 04-26 contacts

MINIATURE RIBBON CABLE SYSTEM - CABLE SOCKET



SECTION 8

SPECIFICATION

Material & Finish

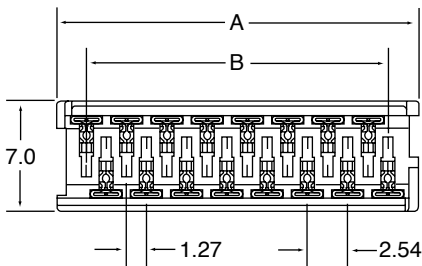
Insulator: PTB, glass reinforced , rated UL 9V-0
Contact: Phosphor Bronze

Electrical Characteristics

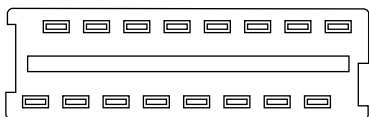
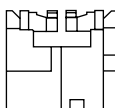
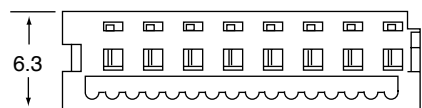
Rating Current: 1 Amp DC
Contact Resistance: 30 mΩ max.
Insulation Resistance: 3000 MΩ min.
Dielectric Voltage: 500v AC for 1 minute
Operating Temperature: -40°C to +105°C

*Terminated with 1.27mm pitch flat ribbon cable.
 *Mating suggestion: A33b, A33c series

OUTLINE DRAWING



Position	A	B
4	7.59	3.81
6	10.13	6.35
8	12.67	8.89
10	15.21	11.43
12	17.75	13.97
14	20.39	16.51
16	22.83	19.05
18	25.37	21.59
20	27.91	24.13
26	35.53	31.75



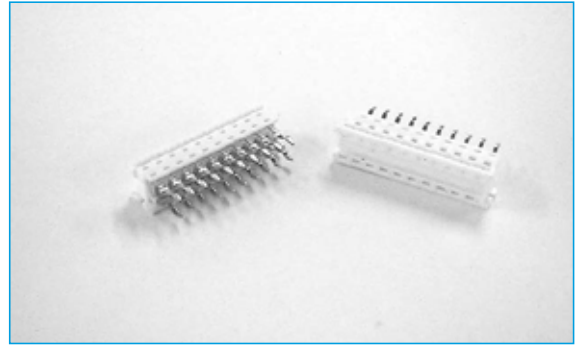
ORDERING INFORMATION

DBC	A33	10	B	T	5
Dubilier Connectors	Series	No. of Contacts	Contact Material	Contact Plating	Colour
		04 = 04 way 06 = 06 way 08 = 08 way 10 = 10 way 12 = 12 way 14 = 14 way 16 = 16 way 18 = 18 way 20 = 20 way 26 = 26 way	B = Phosphor Bronze	T = Tin Plating	5 = White

BOARD TO BOARD/WIRE

- Compatible with other leading manufacturers
- Competitively priced
- Tin plated contacts
- 04-26 contacts

MINIATURE RIBBON CABLE SYSTEM - PCB WIRE MOUNT DIP PLUG



SPECIFICATION

Material & Finish

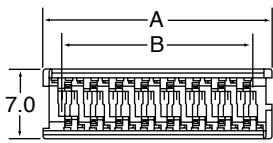
Insulator: PTB, glass reinforced , rated UL 9V-0
Contact: Phosphor Bronze

Electrical Characteristics

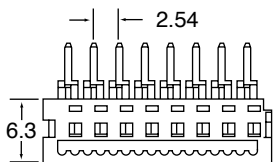
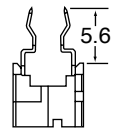
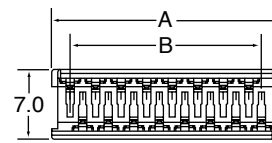
Rating Current: 1 Amp DC
Contact Resistance: 30 mΩ max.
Insulation Resistance: 3000 MΩ min.
Dielectric Voltage: 500v AC for 1 minute
Operating Temperature: -40°C to +105°C

*Terminated with 1.27mm pitch flat ribbon cable.

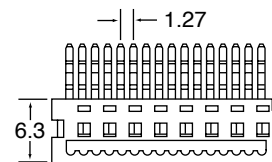
OUTLINE DRAWING



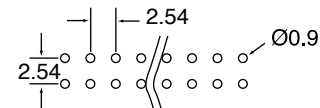
Position	A	B
4	7.59	3.81
6	10.13	6.35
8	12.67	8.89
10	15.21	11.43
12	17.75	13.97
14	20.39	16.51
16	22.83	19.05
18	25.37	21.59
20	27.91	24.13
26	35.53	31.75



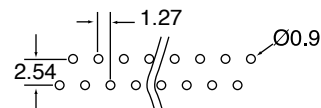
(TYPE A)



(TYPE B)



RECOMMENDED PCB LAYOUT



RECOMMENDED PCB LAYOUT

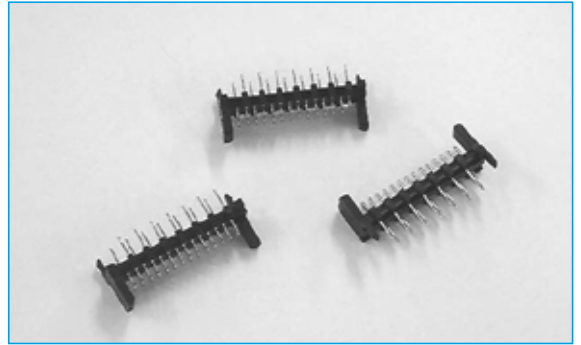
ORDERING INFORMATION

DBC	A33A	10	B	T	B	5
Dubilier Connectors	Series	No. of Contacts	Contact Material	Contact Plating	Footprint	Colour
		04 = 04 way 06 = 06 way 08 = 08 way 10 = 10 way 12 = 12 way 14 = 14 way 16 = 16 way 18 = 18 way 20 = 20 way 26 = 26 way	B = Phosphor Bronze	T = Tin Plating	A = 2.54mm B = 1.27mm	5 = White

BOARD TO BOARD/WIRE

- Compatible with other leading manufacturers
- Competitively priced
- Tin plated contacts
- 2.54mm pitch
- 04-26 contacts

MINIATURE RIBBON CABLE SYSTEM - PCB HEADER VERTICAL



SECTION 8

SPECIFICATION

Material & Finish

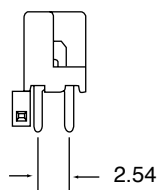
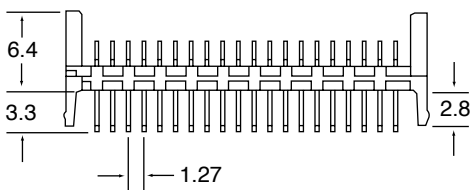
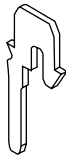
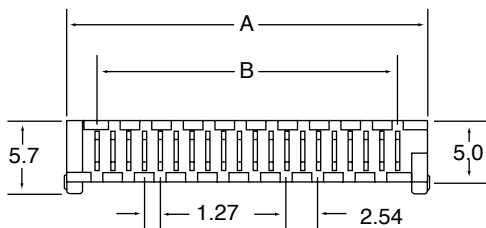
Insulator: PTB, glass reinforced , rated UL 9V-0
Contact: Phosphor Bronze

Electrical Characteristics

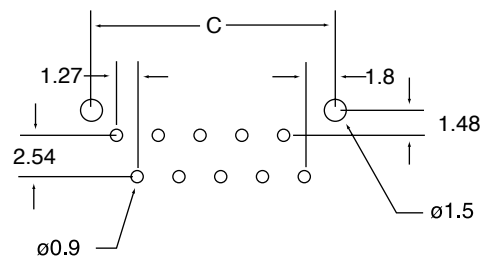
Rating Current: 1 Amp DC
Contact Resistance: 30 mΩ max.
Insulation Resistance: 3000 MΩ min.
Dielectric Voltage: 500v AC for 1 minute
Operating Temperature: -40°C to +105°C

*Mating suggestion: A33 series.

OUTLINE DRAWING



Position	A	B	C
4	8.86	3.81	7.41
6	11.40	6.35	9.95
8	13.94	8.89	12.49
10	16.48	11.43	15.03
12	19.02	13.97	17.57
14	21.56	16.51	20.11
16	24.10	19.05	22.65
18	26.64	21.59	25.19
20	29.18	24.13	27.73
26	36.80	31.75	35.35



RECOMMENDED PCB LAYOUT

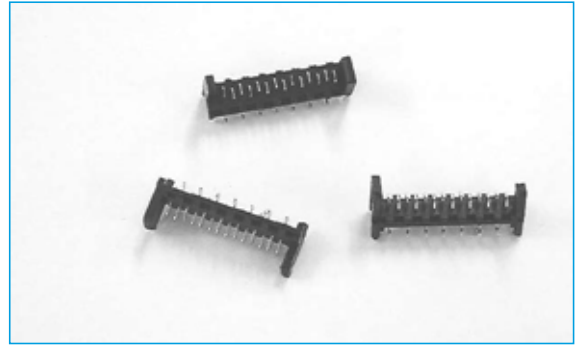
ORDERING INFORMATION

DBC	A33B	10	B	T	1
Dubilier Connectors	Series	No. of Contacts	Contact Material	Contact Plating	Colour
		04 = 04 way 06 = 06 way 08 = 08 way 10 = 10 way 12 = 12 way 14 = 14 way 16 = 16 way 18 = 18 way 20 = 20 way 26 = 26 way	B = Phosphor Bronze	T = Tin Plating	1 = Black

BOARD TO BOARD/WIRE

- Compatible with other leading manufacturers
- Competitively priced
- Tin plated contacts
- 2.54mm pitch
- 04-26 contacts

MINIATURE RIBBON CABLE SYSTEM - SMT PCB HEADER STRAIGHT



SPECIFICATION

Material & Finish

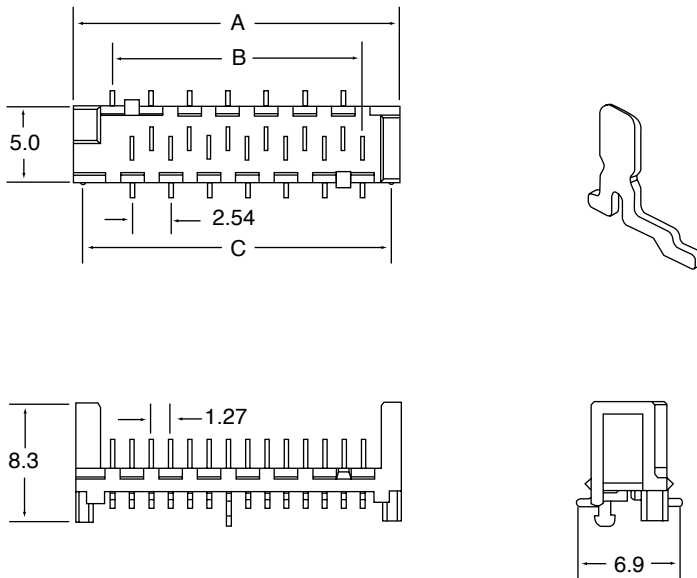
Insulator: Nylon 6T, glass reinforced , rated UL 9V-0
Contact: Phosphor Bronze

Electrical Characteristics

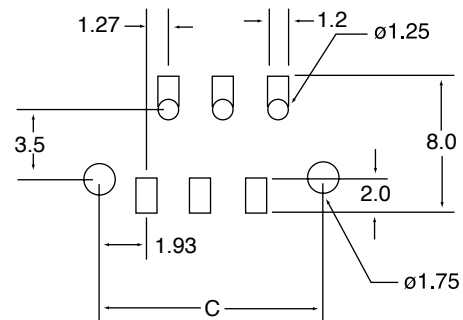
Rating Current: 1 Amp DC
Contact Resistance: 30 mΩ max.
Insulation Resistance: 3000 MΩ min.
Dielectric Voltage: 500v AC for 1 minute
Operating Temperature: -40°C to +105°C

*Mating suggestion: A33 series.

OUTLINE DRAWING



Position	A	B	C
4	8.86	3.81	7.66
6	11.40	6.35	10.20
8	13.94	8.89	12.74
10	16.48	11.43	15.28
12	19.02	13.97	17.82
14	21.56	16.51	20.36
16	24.10	19.05	22.90
18	26.64	21.59	25.44
20	29.18	24.13	27.98
26	36.80	31.75	35.60



RECOMMENDED PCB LAYOUT

ORDERING INFORMATION

DBC	A33C	10	B	T	1
Dubilier Connectors	Series	No. of Contacts	Contact Material	Contact Plating	Colour
		04 = 04 way 06 = 06 way 08 = 08 way 10 = 10 way 12 = 12 way 14 = 14 way 16 = 16 way 18 = 18 way 20 = 20 way 26 = 26 way	B = Phosphor Bronze	T = Tin Plating	1 = Black