

AUDIO

- 3 - 9 way available
- Unshielded, half shielded and full shielded available
- Competitively priced
- Industry Compatible
- Mates with DBCMD11 series
- PCB mounting

PCB MINI JACK DIN SOCKETS



SECTION 6

SPECIFICATION

Contact resistance (DCR 0.1A):

1. Initial, before any testing:
 - (1) Pin to contact or (NC) 30mΩ
 - (2) Plug shield to socket or (NO) 50mΩ
2. After life test with mating plug:
 - (1) Pin to contact or (NC) 60mΩ
 - (2) Plug shield to socket or (NO) 100mΩ

Insertion Force: 0.5kg - 4.0kg Terminals withstand a 500g minimum pull for 10 seconds

Extraction Force: 0.5kg - 3.5kg before movement or breakage occurs

Soldering Heat: Terminal for PC board temperature: 260±5°C for 5 ± 1.0 seconds

Operating temperature range: -25°C to 100°C

Insulating resistance: More than 100MΩ by 500v DC at 90-95% RH, 40°C

Voltage test: Withstand 0.5mA 500v AC between any open terminal for one minute

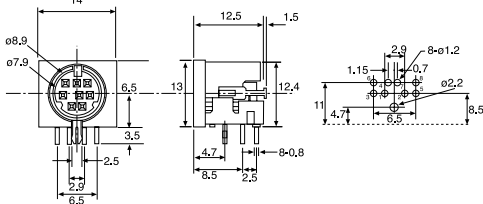
Lifetime: Withstand more than 5000 cycles insertion and withdrawal with testing plug

Rated voltage: 16vdc

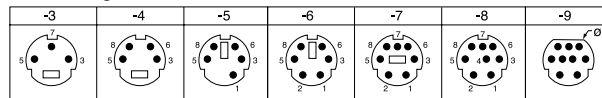
Rated current: 20mA - 0.3A

OUTLINE DRAWING

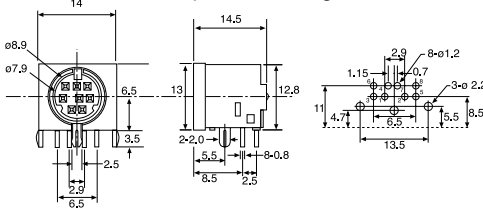
DBCMD0508 - Unshielded



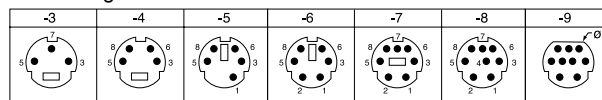
Pin Configuration



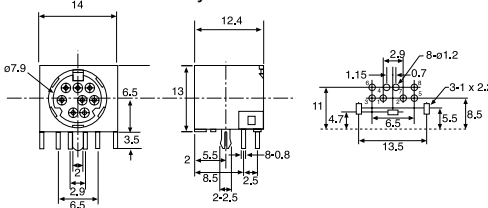
DBCMD0508A - Top, Left and Right Shielded



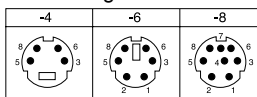
Pin Configuration



DBCMD0509 - Fully Shielded



Pin Configuration



ORDERING INFORMATION

DBC

Dubilier
Connectors

MD

Mini Din
Connector

0508

Series
0508 = Unshielded
0508A = Half shielded
0509 = Fully shielded

-4

N° of Ways

AUDIO

SECTION 6

- 4, 6 and 8 way available
- Competitively priced
- Industry Compatible
- PCB Mounting

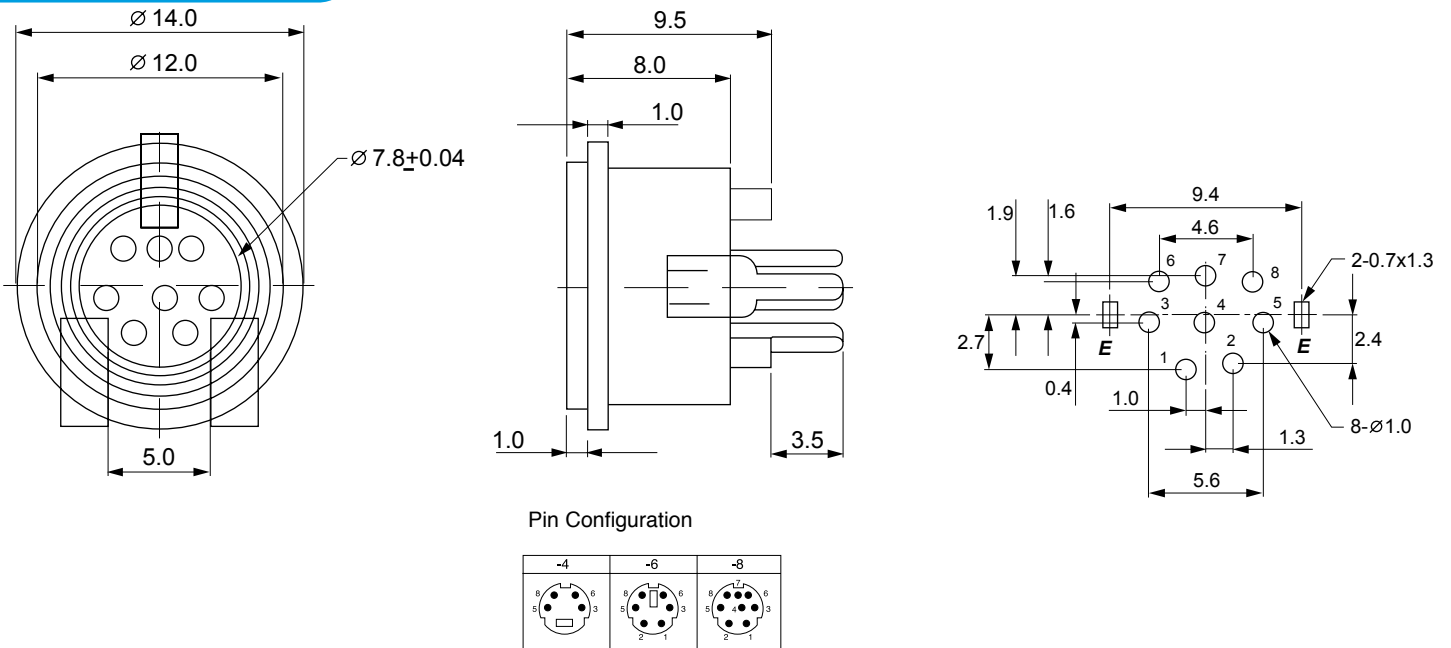
PCB MINI DIN SOCKETS



SPECIFICATION

Contact resistance:	30mΩ max. (INITIAL)
Insulation resistance:	100mΩ min. AT 500V DC
Withstanding Voltage:	500V AC for one minute
Soldering heat:	260±5°C for 5±1 seconds
Insertion Force:	0.5-4.5 KG
Extraction Force:	0.4-3.5 KG
Lifetime:	5,000 cycles min

OUTLINE DRAWING



ORDERING INFORMATION

DBC	MD	0510	8
Dubilier Connectors	Mini Din Connector	Series	No. of Ways
			4=4way
			6=6way
			8=8way

AUDIO

- 3 - 9 way available
- Competitively priced
- Industry compatible
- Mates with DBCMD0508, 0508A & 0509 series
- Cable mounted
- Machined Pin

DIN PLUGS



SPECIFICATION

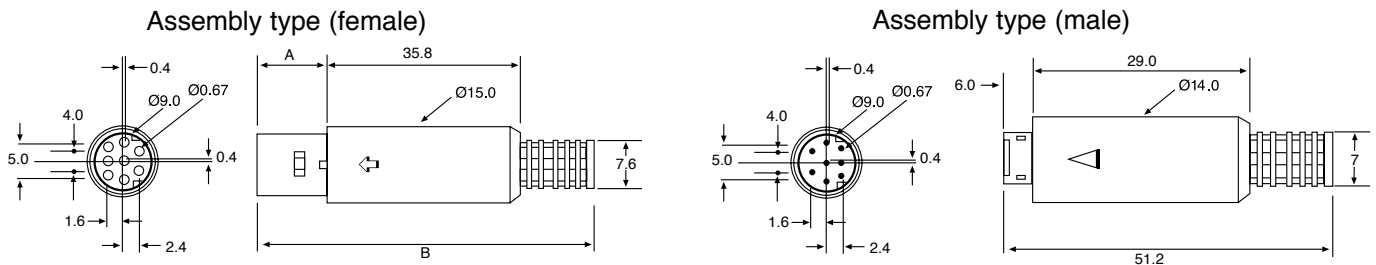
Material & Finish

Insulator:	PBT Glass filled UL94V-0
Cover:	PVC
Contact:	Copper Alloy
Shell:	Steel
Plating:	Contact <ul style="list-style-type: none"> 1. Tin Plated (Complete) 2. Gold Flash (Complete) 3. Selective Gold over Nickel Plated (Contact Area), tin/lead over Nickel Plated (Tail area) Shell Nickel Plated

Electrical Characteristics

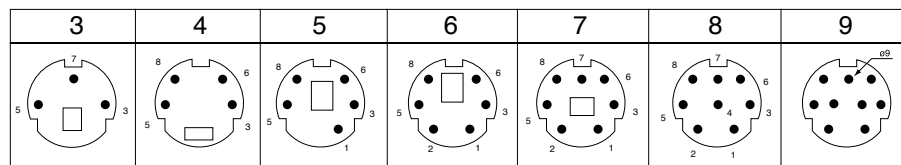
Rating Current:	1 Amp
Contact Resistance:	<15 mΩ
Insulation Resistance:	>1000MΩ at 500v
Dielectric Voltage:	500v at 1 minute
Operating Temperature:	-55°C to +105°C

OUTLINE DRAWING



Pins	A	B
3	20.50	72.00
4	19.30	71.00
5	12.00	63.50
6	12.50	64.00
7	12.00	63.50
8	15.80	67.50

Pins



ORDERING INFORMATION

DBC	MD	11	M	4	T
Dubilier Connectors	Mini Din Connector	Series	Contact Type	No of Ways	Plating Options
			M = Male (plug) F = Female (socket)	3 = 3 Ways 4 = 4 Ways etc...	T = Tin (Std) G = Gold Flash S = Selective