

www.schurter.com/downloads

Primary protection against overvoltage events

Overvoltages occur during events such as switching operations, electrostatic discharges as well as lightning discharges. Be they direct or indirect, they are introduced by galvanic, inductive or capacitive means to electrical lines, with the potential to create devastating effects.



source: luxmundi

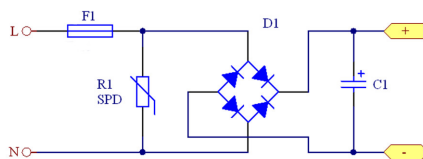
Pulse-shaped load currents are a common circuit occurrence and a typical factor for consideration when designing in primary fuses. Pulses can arise individually (Surge [1]), or recurrently (e.g. timed circuits). With individual pulses, the I^2t value of the fuse wire becomes quite important. This is because the higher the i^2t value the greater the pulse tolerance; with pulse-shaped continuous currents, the calculation of the rms value is crucial, and generally the displacement of the rated current should be taken into account as a result of a possible increase in aging (diffusion).

Basic protection options

Two common circuit protection options are typically used to protect a circuit from overvoltages, a fuse for line protection together with an SPD (Surge Protection Device):

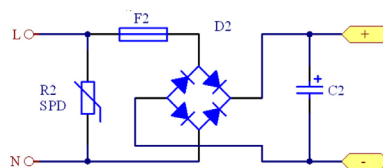
Circuit protection option P1:

Fuse at the input of the circuit before the SPD.



Circuit protection option P2:

Fuse at the input of the circuit behind the SPD.



Comparison of protection options:

- P1 represents a clean, good solution for the circuit from a technical standpoint. In particular, when using an appliance inlet with integrated fuse, this provides an elegant solution. However, greater

attention has to be given to the selection of the fuse with regard to pulse tolerance, due to the fact that the SPD R1 installed downstream results in a high current load for the fuse. The result is a larger I^2t value and a lower loss resistance, which increase the pulse tolerance.

- The P2 wiring is more universal. Only small loads arise in the fuse, F2, due to minimal surge pulses caused by the SPD (e.g. varistor) R2 installed upstream. In this case, the designer has much more leeway when selecting the fuse.
- Damages to the SPDs R1 and R2 do not necessarily trigger the fuse in either circuit variant.
- Recommendation: A combination of SPD with a temperature-controlled fuse is recommended for both circuit variants P1 and P2.

Aging caused by surge pulses

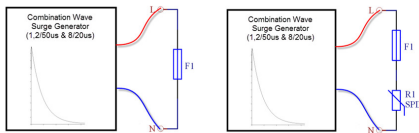
When selecting fuse performance characteristics and size, it should always be kept in mind that the behavior of every fuse is changed as a result of current

www.schurter.com/downloads

impulses. The fuse wire often has a coating, which diffuses increasingly deeper into the base material. This ongoing occurrence produces a new alloy, which in turn leads to a displacement of the rated current and a continuous weakening of the fuse.

Measurement according to IEC 61000-4-5

The ability of a device to cope with these high-energy pulses is measured according to IEC 61000-4-5 with the pulse form 8/20µs for the short-circuit current and 1.2/50µs for the open-circuit voltage. Further details for testing the pulse tolerance [2].



Setup S1 without SPD / Setup S2 with SPD

Setup S1 is a surge of 8/20µs directly to fuse F1. This test achieves the highest load for the fuse through the overvoltage test.

Variation S2 is a realistic setup for some applications with an SPD in a row. The combination wave overvoltage generator creates a mixed signal of 1.2/50µs voltage and 8/20µs current pulse.

The fuse current values shown in the SCHURTER datasheets are tested with

the S1 setup and in Unify Tests with S1 and S2. If the fuses perform properly in the circuit, they must be checked individually. There are no stated tests for fuses behind the SPD - analog to protective circuit P2 - since the overvoltage does not represent a high load for the fuse.

Note: In some of the selected SCHURTER datasheets, the fuses were tested either in the P1 arrangement, without varistor (Setup S1) or the P1 arrangement with varistor (Setup S2).

According to the tests carried out, the above pulse tolerances can be proposed in accordance with the classification into the various standard classes.

The characteristic values for the respective products are listed depending on the rated current.

- [1] <http://www.schurter.ch/en/FAQ#2.6>
- [2] <http://www.schurter.ch/en/FAQ#27.7>
- [3] UMT-H
- [4] UMT 250
- [5] FST 5x20
- [6] SHT 6.3x32

Company

SCHURTER continues to be a progressive innovator and manufacturer of electronic and electrical components worldwide. Our products ensure safe and clean supply of power, while making equipment easy to use. We offer a broad range

of standard products including circuit protection, connectors, EMC products, switches and input systems, as well as electronic manufacturing services. Moreover, SCHURTER is ready to work with our customers to meet their application specific requirements, not covered in our standard range. You can rely on SCHURTER's global network of companies and partners to guarantee a high level of local service and product delivery.

Headquarters

Division Components
SCHURTER Group

SCHURTER AG
Werkhofstrasse 8-12
PO Box
6002 Lucerne
Switzerland
schurter.com

Contact

Asia-Pacific
T +65 6291 2111
info@schurter.com.sg

Europe (Headquarters)
T +41 41 369 31 11
contact@schurter.ch

USA
T +1 707 636 3000
info@schurterinc.com

Test comparison according to current standards

Test comparisons between standards have been carried out, according to the differing international standards. (IEC), e.g. in the USA according to ANSI and/or DOE. This is to ensure that the products tested fulfill all the local requirements.

Norm	IEC		ANSI/IEE		DOE		
Reference	6100-4-5	6100-4-5	C62.41.2-2002	C62.41.2-2002	IEEE C62.41.2	IEEE C62.41.2	IEEE C62.41.2
Class	Inst. Class 3	Inst. Class 4	Location Cat. A	Location Cat. B	Loc. Cat. C Low	Loc. Cat. C Mid	Loc. Cat. C High
Pulse Form 1)							
• Voltage	2kV	4kV	6kV	6kV	6kV	10kV	20kV,
• Current	1kA	2kA	0.5kA	3kA	3kA	5kA	10kA
• Resistance	2Ω	2Ω	12Ω	2Ω	2Ω	2Ω	2Ω
• Strikes	40	40			10 per line	10 per line	10 per line
• Conditions	5+ and 5- at phase angles 0/90/180/270	5+ and 5- at phase angles 0/90/180/270					
Current Level	1kA	2kA	0.5kA	3kA	3kA	5kA	10kA
Current Waveform	8x20µs	8x20µs	8x20µs	8x20µs	8x20µs	8x20µs	8x20µs
Test Impedance	2Ω	2Ω	12Ω	2Ω	2Ω	2Ω	2Ω
Total Strikes	40	40	20	20	20	20	20

1) 1.2x50µs Voltage / 8x20µs Current / Combination Wave