

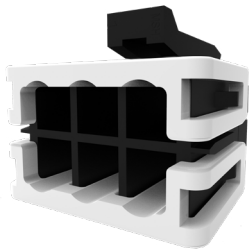
Micro-Fit+ Connector

molex

The Micro-Fit+ connector is a wire-to-board system which offers a 3.00mm pitch, a higher-current rating of 12.5A and superior design options for flexibility and efficient assembly

Features and Advantages

Fully isolated contacts on each side of the interface
Prevents potential arcing

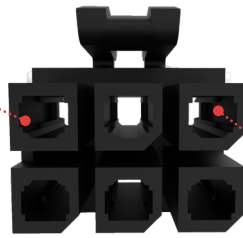


Enhanced TPA design

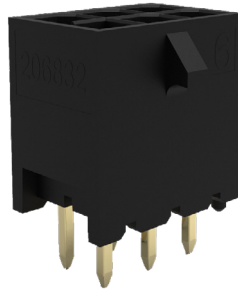
Provides stability and security for the terminals inside the receptacle; offers easy assembly for operators

V-0/Glow Wire combination resin

Reduces the cost of materials and labor and allows customers to meet the European standard for electrical requirements



Unique keying design
Prevents mis-mating; different than standard Micro-Fit 3.0



Reflow options available

Reduces labor costs, saves time and resources

Reduced Mating Force by 40%

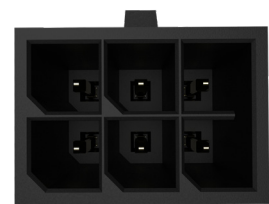
Allows for ease of work, reducing operator fatigue during assembly with its unique design compared to standard Micro-Fit 3.0

40%



Fully polarized housings

Assures proper mating orientation; compatible with existing headers and plugs



Smaller PCB footprint

Provides design flexibility

Applications

Consumer

Washers and dryers
Freezers
Gaming machines
Printers
Refrigerators
Scanners
Security systems
Vending machines
White goods

Medical

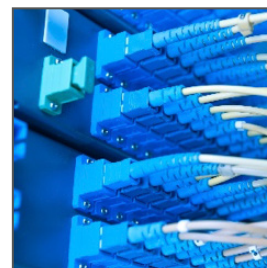
Diagnostic equipment
Patient monitors

Sustainable Energy

Solar power

Automotive

Harness manufacturers
Non-sealed applications
Inside devices
Charging stations



Routers



Appliances

Telecommunications/Networking

Routers and switches
Servers
Storage



Charging Stations

Specifications

REFERENCE INFORMATION

Packaging: Bag, Tray, Reel
 UL File No.: E29179
 CSA File No.: LR19980
 Mates With:
 Series: 266832 Series: 206461
 Use With:
 Series: 206460 Series: 206461
 Series: 206461 Series: 206462
 Terminal Used:
 Series: 206460
 Designed In: Millimeters
 RoHS: Yes
 Halogen Free: Yes
 Glow Wire Capable: Yes

ELECTRICAL

Voltage (max.): 600 Volts AC (RMS) or DC
 Current (max.): 12.5A
 Contact Resistance: 10 milliohms Maximum
 Dielectric Withstanding Voltage: No breakdown;
 current leakage < 5 mA
 Insulation Resistance: 1000 Megohms Minimum

MECHANICAL

Pitch: 3.00mm
 Contact Insertion Force: 14.7 N (3.3 lbf)
 Maximum insertion force
 Contact Retention to Housing: 24.5N
 Insertion Force to PCB: 13.7 N (3.1 lbf)
 Minimum retention force
 Mating Force: 8N per circuit
 Unmating Force: 3.7N per circuit
 Durability (min.): Mate connectors up to 25 cycles
 at a maximum rate of 10 cycles per minute.

PHYSICAL

Housing: GLASS FILLED LIQUID CRYSTAL POLYMER
 Contact: HIGH COPPER ALLOY
 Plating: TIN OVER NICKEL OVER ALL
 PCB Thickness: Standard 1.57mm
 Operating Temperature: -40 to +105°C

Ordering Information

TERMINALS

Series	Description	AWG
206460	Female Crimp Terminal	16, 18, 20 to 24, 26 to 30

RECEPTACLES

Series	Description	Circuit
206461	Receptacle Housing	2 to 24

HEADERS

Series No.	Description	Orientation	Circuit	Plating
206832	Header Housing	Vertical	2 to 24	Tin over nickel overall

TPA

Series	Description	Circuit
206462	TPA	2 to 24

www.molex.com/link/microfitplus.html