

# Solderless PCB Connectors

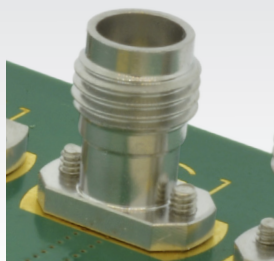
## Features & Benefits

- Solderless compression mount for fast and easy installation (available with installation screws)
- Cost effective solutions for testing
- Durable and rugged design
- SMA, 2.92mm, 2.4mm, 1.85mm and SMP QuarterBack® (secure locking) series available
- Customized PCB footprint design through simulation optimization
- Available with multiple screw lengths to fit your PCB application
- COTS versions readily available through distribution

## Applications

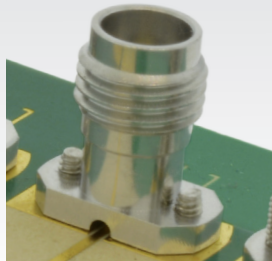
- RF test and measurement boards
- High Speed Digital component test
- Stripline, microstrip and coplanar waveguide PCB launch

### Stripline



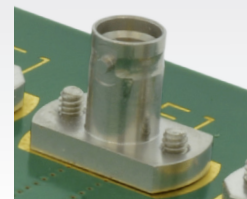
Launches directly to a plated via leading to a stripline transmission line within the PCB

### CPW / Microstrip



Launches directly to a Coplanar Waveguide or Microstrip trace, which exits through a small mouse hole on the side

### SMP QuarterBack®



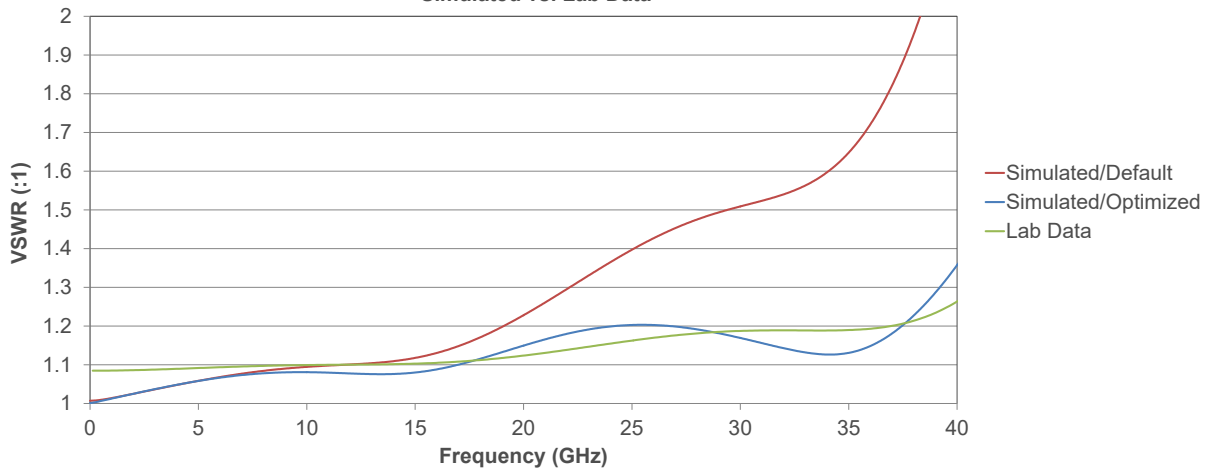
Positive bayonet locking in small compression mount form factor

## Specifications

Electrical	SMA	2.92mm	2.4mm	SMP QB®
Impedance	50Ω	50Ω	50Ω	50Ω
Max Frequency	26.5 GHz	40 GHz	50 GHz	40 GHz

Mechanical	SMA	2.92mm	2.4mm	SMP QB®
Intermateability	3.5mm, 2.92mm	SMA, 3.5mm	1.85mm	SMP
Recommended Mating Torque	7 - 10 in-lbs	7 - 10 in-lbs	5 - 7 in-lbs	Bayonet
Recommended Board Mount Torque	12 in - oz	12 in - oz	12 in - oz	12 in - oz
Max Screw Length	0.150" + Max Board Thickness	0.150" + Max Board Thickness	0.195" + Max Board Thickness	0.175" + Max Board Thickness
Mating End Clearance	0.218" Min	0.218" Min	0.236" Min	0.130" Min

**2.92mm Compression Mount  
In Stripline Application (Gated)  
Simulated vs. Lab Data**



### Better Performance through Simulation

- Simple layout designed with just mechanical considerations can lead to large reflections and increased losses
- Optimal footprint for your specific board stack and requirements can be generated through iterative analysis in 3D full wave electromagnetic simulation software
- With careful consideration of assembly techniques and material properties, simulation will track real world performance closely, yielding the best possible results for your application

### Compression Mount Part Numbers

Series	Max Frequency	Applications	Part Number
SMA	26.5 GHz	Stripline	SF2921-61356
		CPW / Microstrip	SF2921-61345
2.92mm	40 GHz	Stripline	SF1521-60061
		CPW / Microstrip	SF1521-60070
2.4mm	50 GHz	Stripline	SF1621-60029
		CPW / Microstrip	SF1621-60026
SMP QB®	40 GHz	Stripline	SF1211-66214
		CPW / Microstrip	SF1211-66230

\*Variations that include 2 screws for PCB installation are also available and are denoted with a '-1S (4.76mm screws) and '-2S (6.35mm screws)

