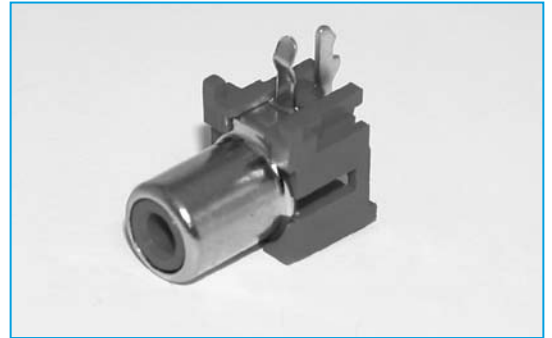


AUDIO

RCA JACK RIGHT ANGLED SOCKET

- Competitively priced
- Industry Compatible
- PCB Mounting

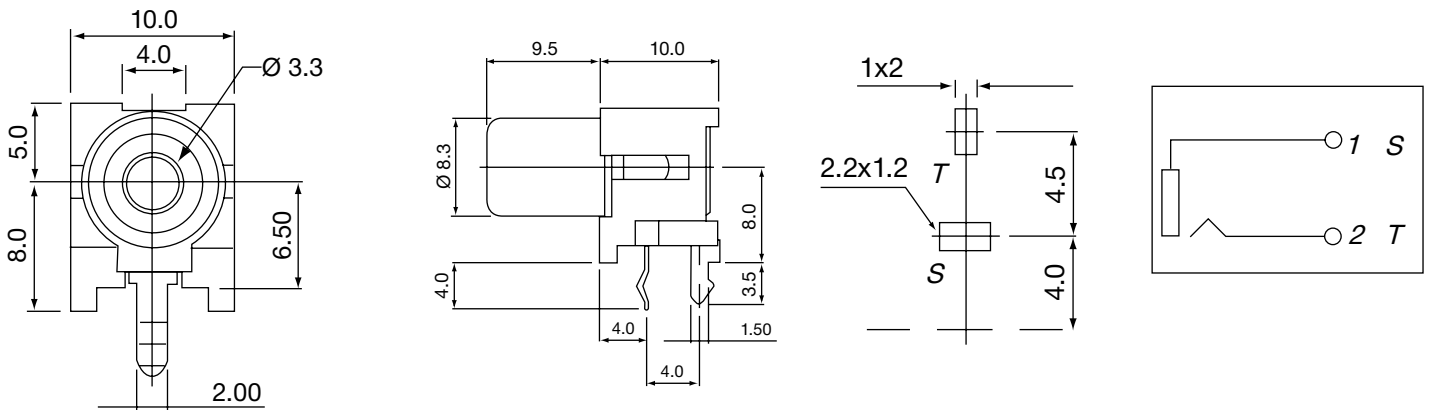


SECTION 6

SPECIFICATION

Contact resistance:	30mΩ max. (INITIAL)
Insulation resistance:	100mΩ min. AT 500V DC
Withstanding Voltage:	500V AC for one minute
Soldering heat:	260±5°C for 5±1 seconds
Insertion Force:	0.3-3.0 KG
Extraction Force:	0.3-3.0 KG
Lifetime:	5,000 cycles min

OUTLINE DRAWING



ORDERING INFORMATION

DBC	RCA	0848A	-2B
Dubilier Connectors	RCA Jacks	Series	Colour
			-2B = Black -2R = Red -2W = White -2Y = Yellow

AUDIO

RCA JACK RIGHT ANGLED SOCKET

SECTION 6

- Competitively priced
- Industry Compatible
- PCB Mounting



SPECIFICATION

Contact resistance (DCR 0.1A)

1, Initial, before any testing:

- (1) Between the terminals (NC): 30mΩ
- (2) Plug to sleeve, tip ,(NO) contact: 50mΩ

2, After life test with mating plug:

- (1) Between the terminals (NC): 60mΩ
- (2) Plug to sleeve, tip,(NO) contact: 100mΩ

Insertation Force:

0.3kg - 5.0kg

Terminals must withstand a 500g minimum pull for 10 seconds

Extraction Force:

0.3kg - 5.0kg

before movement or break from housing occurs

Soldering Heat:

Terminal for PC board temperature: 260 ± 5 °C for 5 ± 1.0 seconds

Operating Temperature range:

-25 °C to 70 °C

Insulating Resistance:

More than 100MΩ by 500v DC at 90 - 95% RH, 40 °C

Voltage Test:

Withstand 0.5mA 500v AC between any open terminal for one minute

Lifetime:

Withstand more than 5000 cycle's insertion and withdrawal with testing plug

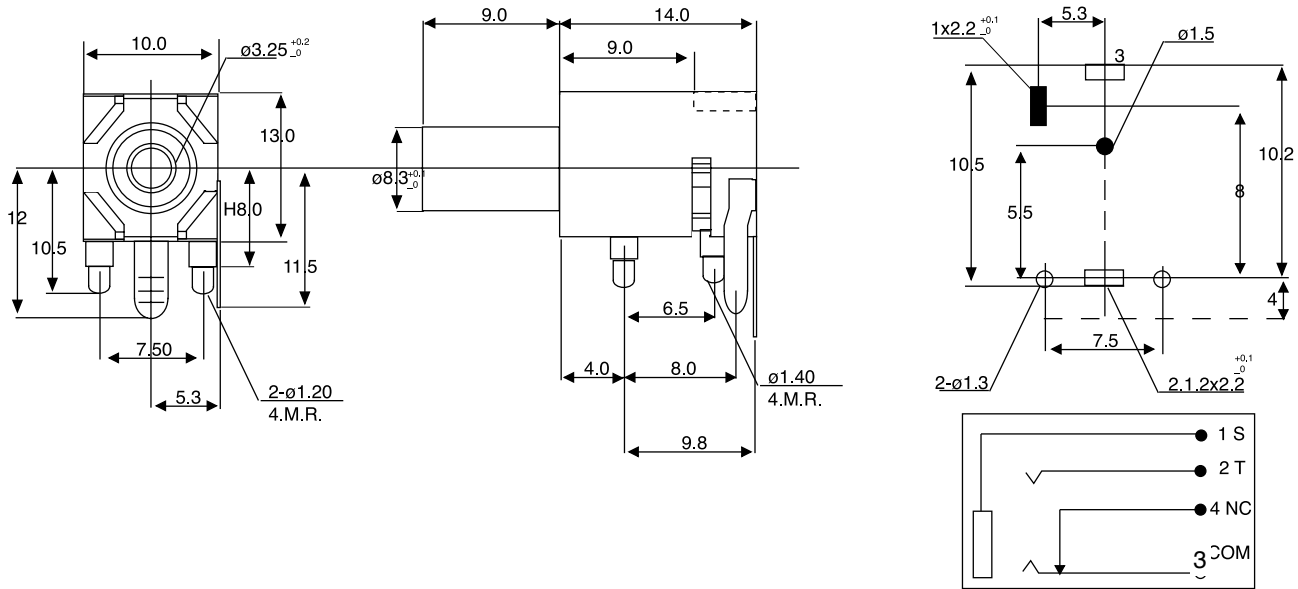
Rated Voltage:

16vdc

Rated Current:

20mA - 0.3A

OUTLINE DRAWING



ORDERING INFORMATION

DBC	RCA	0843
Dubilier Connectors	RCA Jack	Series