

# VOICE ENABLEMENT

Six Pack  
JULY 2022



SECURE CONNECTIONS  
FOR A SMARTER WORLD

PUBLIC

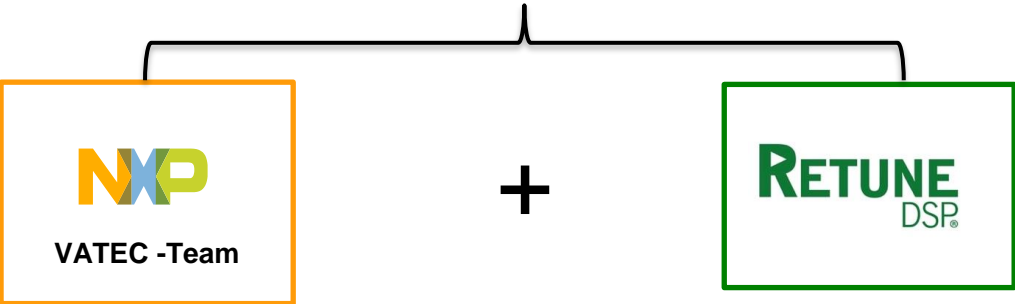
NXP, THE NXP LOGO AND NXP SECURE CONNECTIONS FOR A SMARTER WORLD ARE TRADEMARKS OF NXP B.V.  
ALL OTHER PRODUCT OR SERVICE NAMES ARE THE PROPERTY OF THEIR RESPECTIVE OWNERS. © 2022 NXP B.V.



# GIVING VOICE TO A NEW GENERATION OF EDGE DEVICES



## VOICE & AUDIO TEAM



NXP Voice & Audio solutions creates **best-in-class, small footprint, low-power** software solutions on NXP platforms and select audio SoCs and DSPs

### Combined Team Highlights

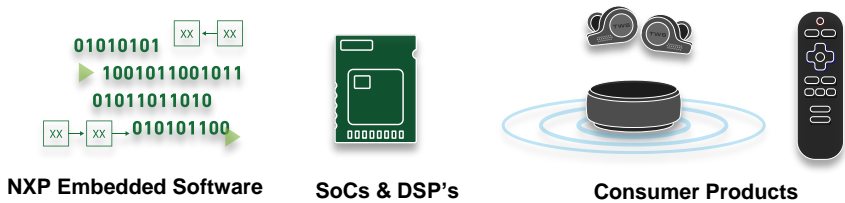
- Strong DSP Engineers, ML Engineers and Acoustics Engineers
- Engineers named on >50 worldwide patents in Acoustics, Signal Processing and Machine Learning
- 230+ person-years of collective experience in Audio, Acoustics and Voice Processing

## ONE-STOP FOR VOICE PROCESSING NEEDS AT THE EDGE



## Recognized and proven technology

NXP's embedded voice processing software in more than 45 shipping products and over 50 Million devices since 2015.



# VOICE AND AUDIO TECHNOLOGY SPECIALISTS

## LEADERS IN



Two-Way Voice Communications

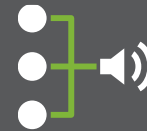


Voice UI Audio Front  
End Solutions



Wake Word Engine /  
Embedded Speech  
Recognition

## SPECIALISTS IN



Microphone Arrays



Multi-channel Acoustic  
Echo Cancellation



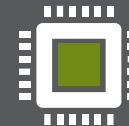
Battery Operated,  
Low Power Devices



Always-On Voice



Acoustic Design  
& Testing



ML, Small kB,  
CPU footprint

# FULL RANGE OF SOLUTIONS TO ENABLE CUSTOMERS' VOICE PROCESSING

## FREE ENABLEMENT

Available to ALL CUSTOMERS  
via MCUXpresso SDK



### VOICE INTELLIGENT TECHNOLOGY

State-of-the-art deep learning speech recognition technology; provides 2 & 3-mic Beamforming / Wake Word & Voice Command Engine

- Online Model Creation Tool
- Wake Word
- Up to 12 Commands
- Supports English & Mandarin

Mass Market

## PREMIUM OFFERINGS

### NXP Royalty-Bearing Voice Software



#### COMMUNICATION SUITE

Advanced full-duplex Voice Processing Software leveraging Traditional & Machine Learning Techniques

#### AUDIO FRONT-END

Beamforming, Acoustic Echo Cancellation and Dereverberation Signal Processing Software

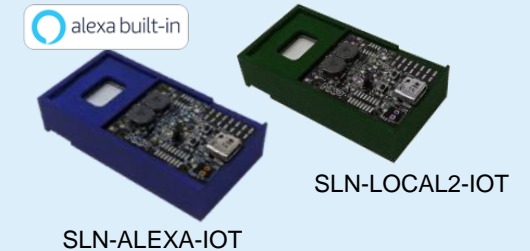
#### WAKE WORD ENGINE

Highest Performance, Smallest Footprint, Ultra-Low-power Capable Voice Trigger

### Voice UI Software

Strategic / High Volume Customers

### Turnkey Solutions



#### RT1050, RT1060 & RT1170 EDGEREADY SOLUTIONS

Hardware & Software bundles targeted at Voice UI and Touch-less HMI Applications

Bundled Voice SW solutions available from NXP & third-party partners

Mass Market

# COMMON APPLICATIONS

## VOICE COMMUNICATION



TWS



Headphones



Smart Doorbells



Speakerphones



Smart Watch

## VOICE AS A USER INTERFACE (VOICE UI / CONTROL)



Sound Bar



Smart Speaker



TV / Set-top Box



Smart Watch



TWS



Remote Controls



Home appliances



Headphones



Wearables

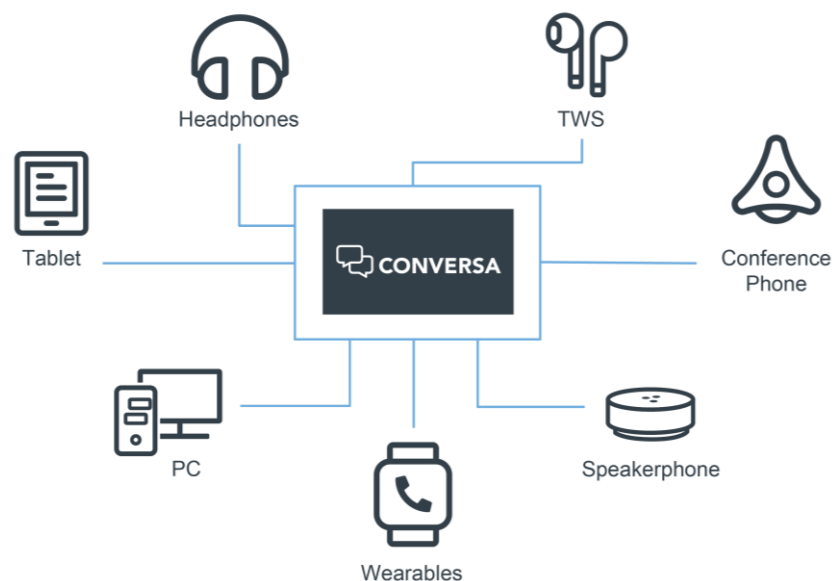
# CONVERSA OVERVIEW

[WWW.NXP.COM/CONVERSA](http://WWW.NXP.COM/CONVERSA)



Conversa is a comprehensive full-duplex hands-free telephony speech processing suite providing total control of uplink and downlink audio.

Conversa embedded multimicrophone, full-duplex voice processing delivers the ultimate in sound quality for speakerphone and headset applications.



## Features

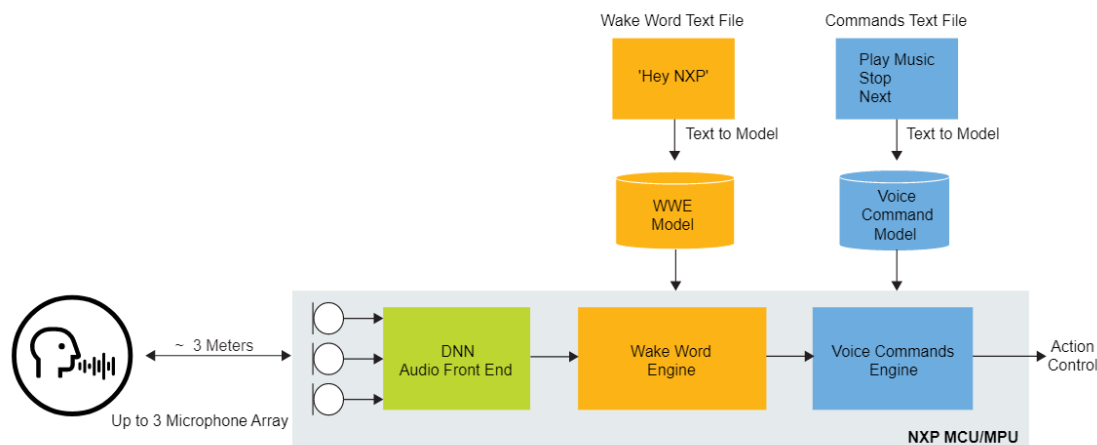
- Complete Uplink and Downlink Audio Processing
- Super-wideband Audio up to  $F_s=32\text{kHz}$
- Acoustic Echo Cancellation
- 55dB total Acoustic Echo Cancellation (AEC) including Nonlinear Processing (NLP)
- Ambient Noise Reduction
- Adaptive Multi-mic Beamforming Leveraging Machine Learning
- Wind-noise cancellation
- Handling-noise cancellation
- Dynamic compression
- Limiter and squelch
- Sidetone
- Parametric EQs

## Supported Devices

- i.MX RT500/600
- i.MX RT1060/1160/1170
- Compatible with Arm Cortex M7, M33, Cadence Hifi 4, Hifi 5, Fusion F1
- Additional ports available upon request

Voice Intelligent Technology (VIT) provides voice UI enablement with always-on wake word detection and local commands.

It is based on state-of-the-art deep learning and speech recognition technologies and provides a complete audio front end / wake word / voice commands solution.



## Features

- Always-on technology
- Wake word model creation with Text to Model (no audio database required)
- Custom commands using Text to Model
- Large vocabulary available for Text to Model
- Far-field audio front end supporting different microphones topologies (no tuning required) - up to 3 microphones supported
- Voice Activity Detection (VAD) helping minimize processing load during silent, non-speech period
- English and Chinese language support
- German, Spanish, Turkish, Japanese, Korean, French, Italian available on request
- Up to 3 Wake Words supported in parallel
- [Online VIT model generation tool](#)

## Supported Devices

- i.MX RT500/600
- i.MX RT1040/1050/1060/1160/1170
- i.MX8 Mini, i.MX8 Plus, i.MX8 Nano



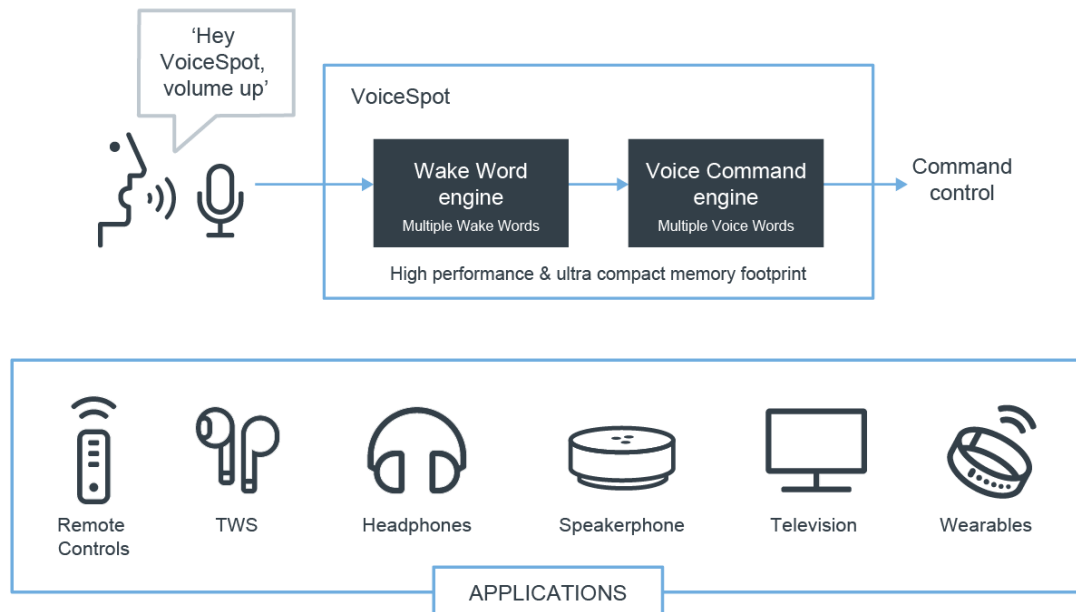
# VOICESPOT OVERVIEW

[WWW.NXP.COM/VOICESPOT](http://WWW.NXP.COM/VOICESPOT)



VoiceSpot is a highly accurate, small memory and MIPS profile wake word engine supporting custom voice trigger words and phrases.

As a premium alternative to VIT, this wake word engine leverages custom trained models and advanced machine learning.



## Features

- Small memory footprint
- Low computational complexity allows ALWAYS ON functionality
- Low latency, up to 100mS faster response time than competing solutions
- Custom Voice Triggers for target words / phrases and/or demographics are supported
- Multiple Trigger instances are supported
- Performs well in noise and reverberation, even with a single microphone
- Low False Reject Rate (FRR)
- Low False Accept Rate (FAR)
- Compatible with [MCUXpresso SDK](#)

## Supported Devices

- i.MX RT500/600
- i.MX RT1060/1160/1170
- i.MX8 Mini, i.MX8 Plus, i.MX8 Nano
- LPC55xx
- Compatible with Cortex M4F, M7, M33



# VOICESEEKER OVERVIEW

[WWW.NXP.COM/VOICESEEKER](http://WWW.NXP.COM/VOICESEEKER)



VoiceSeeker is a multi-microphone voice control audio front-end signal processing solution.

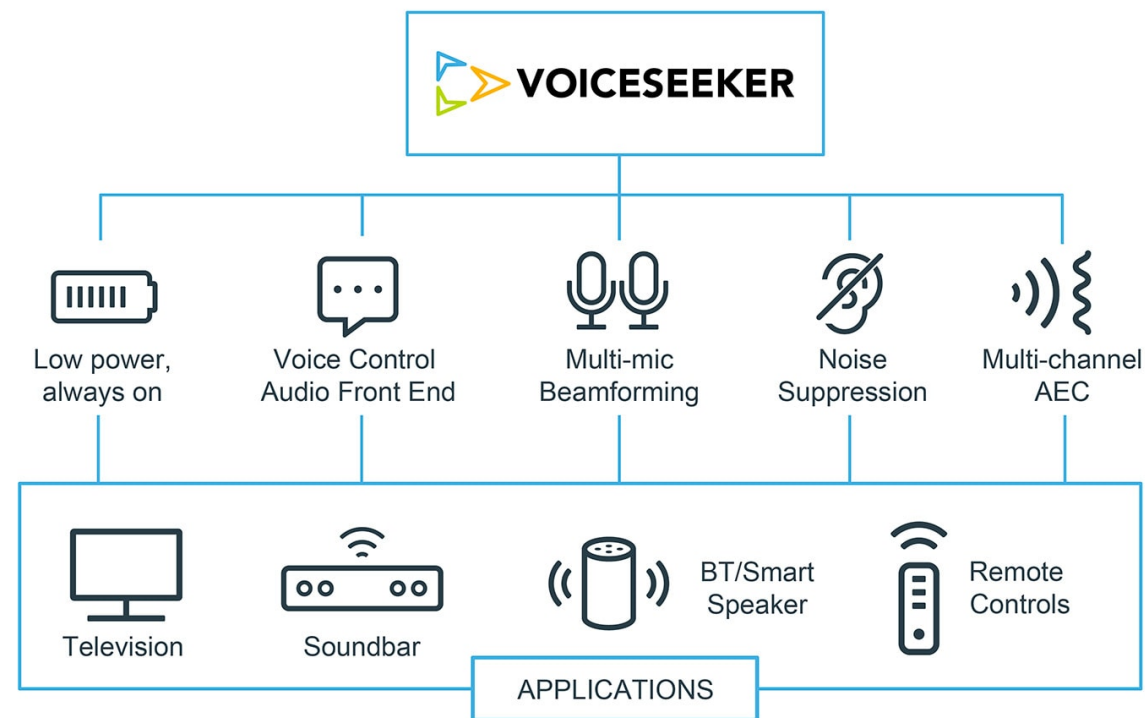
VoiceSeeker provides high performance beamforming and multi-channel acoustic echo cancellation (AEC) to enable reliable trigger word detection and payload accuracy.

## Features

- High Performance Beamformer - enables robust noise and reverberation immunity
- Flexible microphone placement
- Multichannel AEC - compatible with 5.1, 7.1, 5.1.2, 7.2.4 playback formats
- Direction of Arrival indication

## Supported Devices

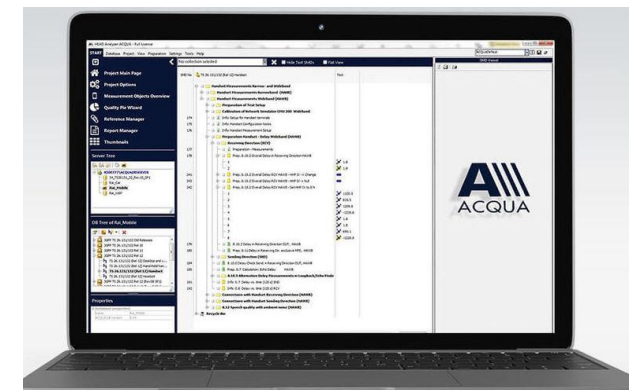
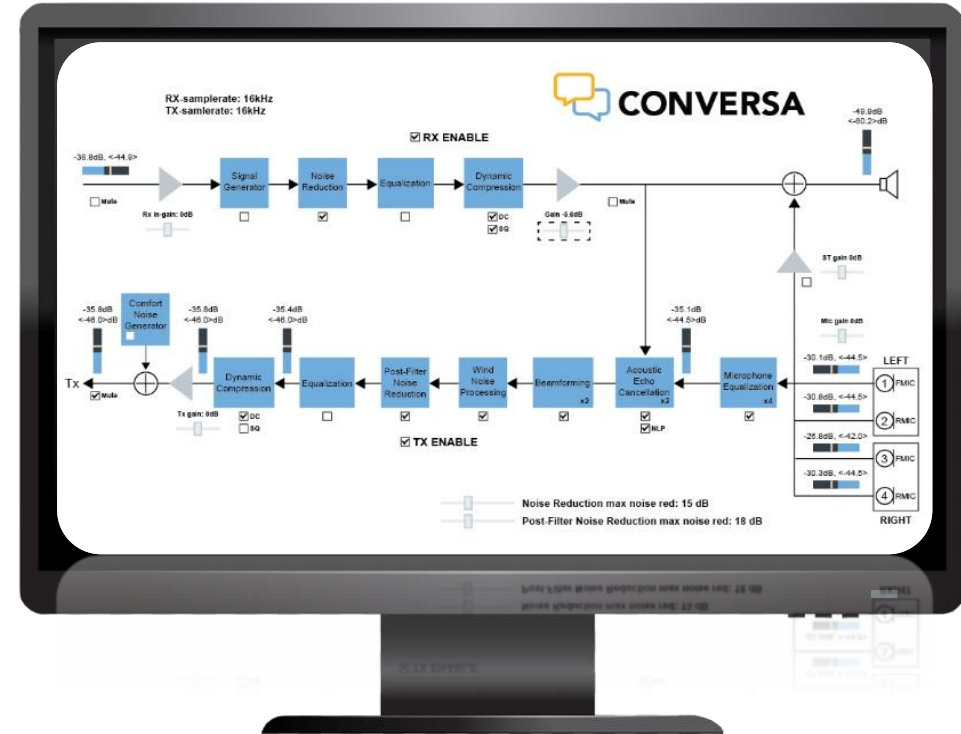
- i.MX8 Mini, i.MX8 Plus, i.MX8 Nano
- i.MX RT500/600
- i.MX RT1060/1160/1170



# NXP SUPPORT / ENGINEERING SERVICES

NXP can help you implement our Voice Technology. We offer the following services throughout your product development cycle:

- Industrial Design Input for Acoustic System
- Microphone & Loudspeaker Placement Guidance
- Audio Architecture Review, Advice and Guidance
- Troubleshooting and Audio Path Debug
- Evaluate Prototypes & EV samples
- Preliminary Tunings & Test Reports
- Final Tuning & Test Reports
- Benchmarking against Competitors



Contact [Voice@NXP.com](mailto:Voice@NXP.com)

## VOICE ENABLEMENT SUPPORT | MORE INFORMATION



### Web

[www.nxp.com/voice](http://www.nxp.com/voice)

[www.nxp.com/conversa](http://www.nxp.com/conversa)

[www.nxp.com/voiceseeker](http://www.nxp.com/voiceseeker)

[www.nxp.com/voicespot](http://www.nxp.com/voicespot)

[www.nxp.com/vit](http://www.nxp.com/vit)



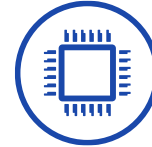
### Community

Voice Software Forum



### Support

[Voice@NXP.com](mailto:Voice@NXP.com)



### Supported Platforms & Cores

i.MX RT

i.MX 8M

Arm Cortex M-Series

Arm Cortex A-Series

Cadence Hifi



### Ecosystem Support

[MCUXpresso SDK](#)

Yocto BSP (Coming Soon)

[VIT Modeling Tool](#)



SECURE CONNECTIONS  
FOR A SMARTER WORLD