



AVNET AES-LPA-502-G

RF BREAKOUT CARD FOR ZYNQ® ULTRA SCALE+™ RFSoc

The AES-LPA-502-G is an out-of-the-box AMS RFMC plug-in card that mates with the ZCU111 board via two Samtec LPAM (8x40) connectors on the bottom of the AES-LPA-502-G card.

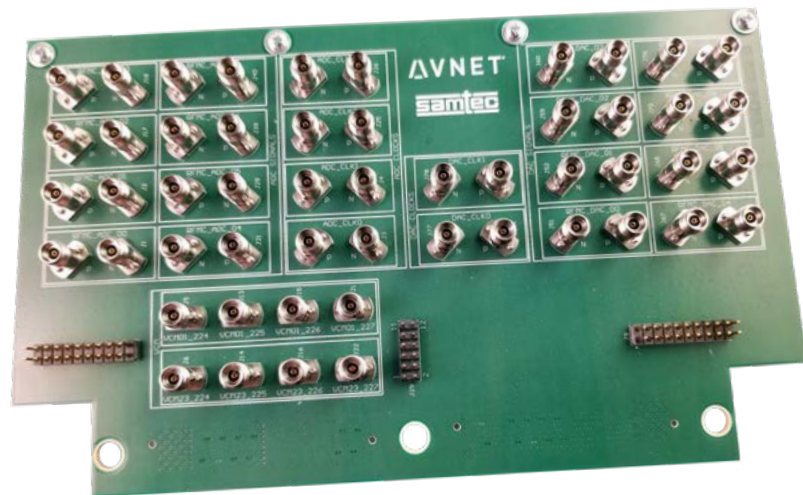
KEY FEATURES INCLUDE:

J333 LPAM-40-01.0-S-08-2-K-TR - ADC • J888 LPAM-40-01.0-S-08-2-K-TR - DAC

Eight DACs and eight ADCs routed to RF connectors • Four pairs external input clocks for ADCs routed to RF connectors

Two pair external input clocks for DACs routed to RF connectors • RFSoc bank 224-227 VCM nets routed to RF connectors

Supports carrier frequencies ≥ 20 GHz • Leverages Samtec RSP-208784-01 screw-mount, straight SMA plug

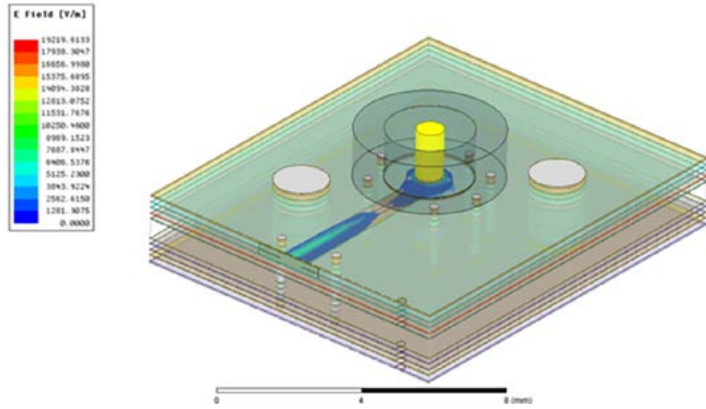


AVNET AES-LPA-502-G

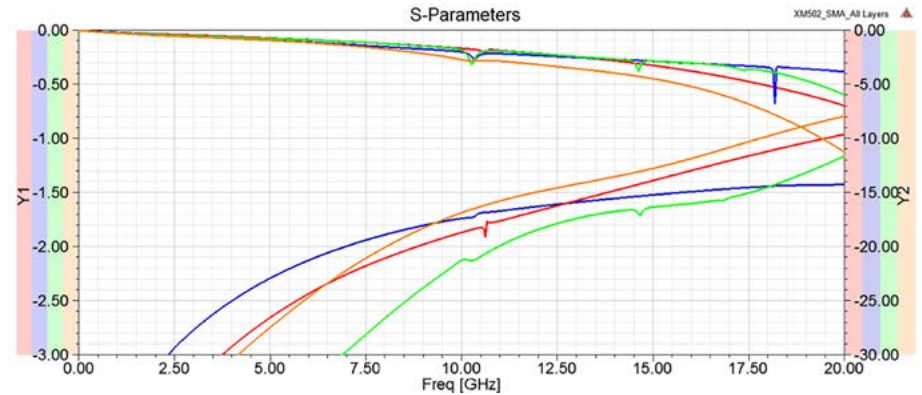
RSP-208784-01 CONNECTOR PERFORMANCE



[avnet.com/RFsocket](https://www.avnet.com/RFsocket)



RSP-208784-01 Breakout Region



RSP-208784-01 IL/RL Performance

Samtec's FAEs and team of technical experts stand ready to assist you with your next design project.

Our Capabilities include: Mechanical Samples • ECAD/MCAD Files • Contract PCB layout • PCB layout design review
FAE technical support • SI Evaluation Kits • Signal Integrity Support **Please e-mail SIG@samtec.com for more information.**