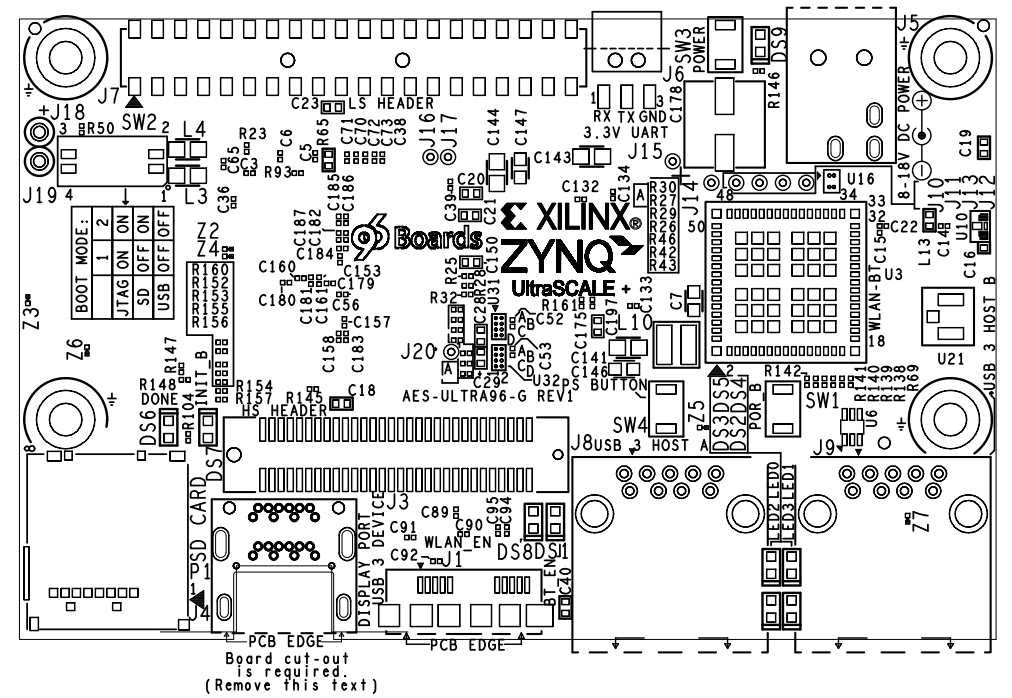
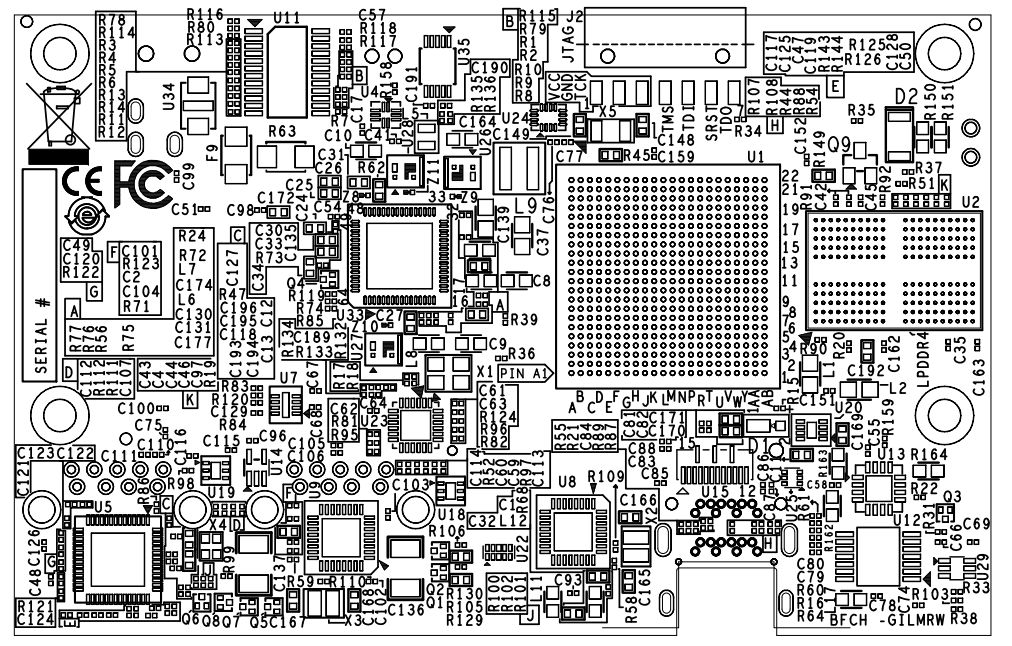


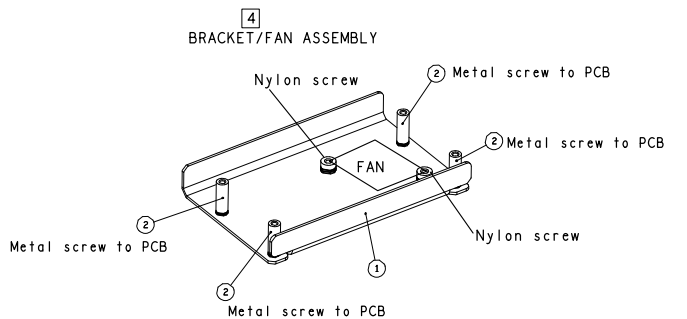
REVISIONS			
REV	DESCRIPTION	DATE	APPROVED
A	PROTOTYPE	05-11-16	
B		11-29-16	
C		06-14-17	
D		07-19-17	



TOP SIDE



BOTTOM SIDE (MIRRORED)



- NOTES: (UNLESS OTHERWISE SPECIFIED)
- ASSEMBLE TO MEET INSPECTION CRITERIA OF IPC-A-610, CLASS 2, CURRENT REVISION.
  - BAG AND TAG (OR MARK CONTAINER) WITH PART NUMBER.
  - REFERENCE SCHEMATIC (OR AVL) FOR BILL OF MATERIALS.
  - TO SOLDER IN THE RED FAN WIRE TO J18 AND THE BLACK ONE TO J19.
  - SERIAL NUMBER INSTRUCTIONS:  
PLEASE LABEL EACH BOARD WITH AN ASSEMBLY STICKER ON THE TOP SIDE.  
SEE ASSEMBLY DRAWING FOR LOCATION OF THE STICKER.  
LISTED BELOW ARE THE SERIAL NUMBERS FOR EACH BOARD.  
1. 1280893d001- 1280893dxxx

ITEM NO.	QTY.	DESCRIPTION	PART NUMBER	REMARKS
1	1	FAN BRACKET PLATE	10039-99	
2	4	STDF_SELF-CLINCH,M2.5,14mm LG	T50-M25-1400Z1	PENN ENG.
3	2	STDF_SELF-CLINCH,#4-40,0.187"LG	50-6440-6Z1	PENN ENG.

UNLESS OTHERWISE SPECIFIED	SIGNATURES	DATE
DIMENSIONS ARE IN INCHES TOLERANCES ON: 2 PL DECIMALS +/- .010 3 PL DECIMALS +/- .005 ANGLES + FRACTIONS +	DRAWN AVNET DESIGN CHECKED ENGRG B. FORSSSE ISSUED	03-15-18  06-14-17

**AVNET** AVNET DESIGN SERVICES

PCB, ROHS COMPLIANT  
AES-ULTRA96-G  
www.ultra96.org  
TOP AND BOTTOM ASSEMBLY

SIZE D	DWG NO PBA-USDEV1	REV 1
SCALE NONE	SHEET 1 OF 1	